

FLUANCE®

QUICK START GUIDE
DB10

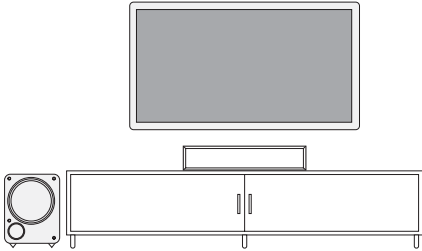
FLUANCE®

Fluance has successfully revolutionized the home audio industry. Fluance develops a broad line of high-fidelity products based on five key aspects: Sound Quality, Solid Construction, Performance, Style, and Value. These distinctive points make Fluance the most reliable and respected name among our fans and ensure your music is heard the way your favorite artist intended.

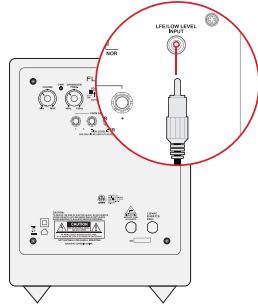
Today, Fluance expands on this vision and takes its approach to a new level. With our dedicated team, Fluance assures its products meet the most stringent marks of quality control - overseeing each step from design to manufacturing - and has raised the industry bar in customer experience and quality to be second-to-none.

FIRST TIME SET UP

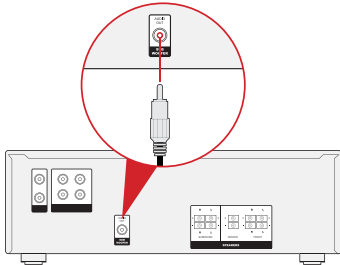
Step 1: Place the subwoofer in the most optimal position. *Fluance recommends having the woofer face the listener while being positioned near the front channel speakers in a corner if possible.*



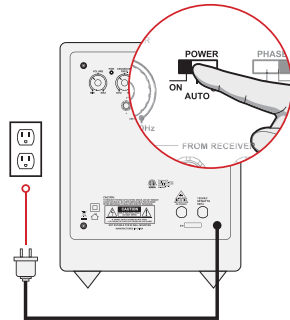
Step 2: Attach the subwoofer cable to the LFE/Low Level Input of the DB10.



Step 3: Attach same subwoofer cable to the subwoofer output of your home theater receiver.



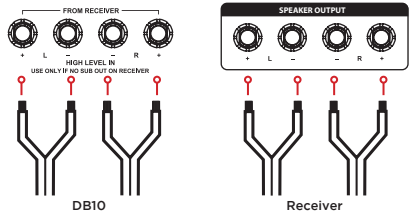
Step 4: Connect power cable to wall outlet. Set power switch to either ON or AUTO.



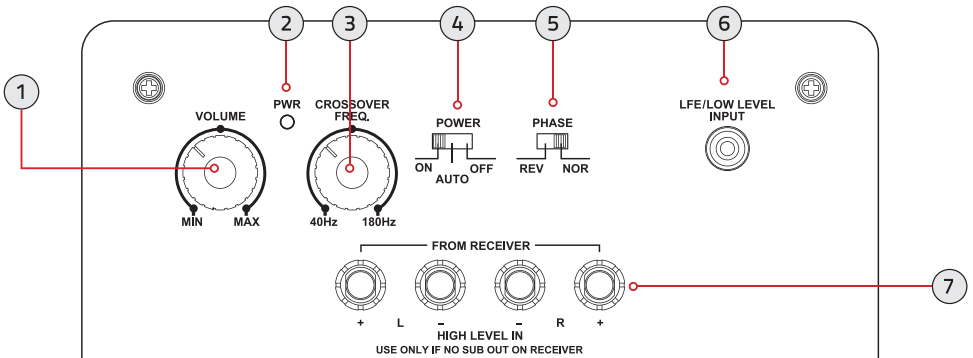
OPTIONAL STEP:

Attach speaker wire to the speaker inputs of the subwoofer. Attach same speaker wire to the channel outputs of your choice on the home theater receiver.

Refer to receiver manual for setup instructions.



BACK PANEL LAYOUT



- 1. Volume** - Adjust to reduce/increase the intensity of the sound emitted from the DB10.
- 2. PWR** - Power LED indicator.
- 3. Crossover** - Adjust to reduce/increase the frequency range of the DB10. The frequency range is less than 40Hz to 180Hz.
- 4. Power** - ON / AUTO ON / OFF (AUTO ON: The subwoofer will power on automatically when it detects a signal from the home theater receiver.)
- 5. Phase** - REVERSE / NORMAL (Adjust to ensure the DB10 is in phase with the rest of your speaker system. The DB10 will be in phase if the bass response sounds full and balanced.)
- 6. LFE/Low Level Input** - Connect subwoofer cable to receive signal from home theater receiver.
- 7. Speaker Inputs** - Connect speaker wire to receive signal from home theater receiver.

SAFETY INFORMATION

FCC Statement

This equipment has been tested and found to comply with the limits for a Class B digital device, pursuant to Part 15 of the FCC Rules. These limits are designed to provide reasonable protection against harmful interference in a residential installation. This equipment generates uses and can radiate radio frequency energy and, if not installed and used in accordance with the instructions, may cause harmful interference to radio communications. However, there is no guarantee that interference will not occur in a particular installation. If this equipment does cause harmful interference to radio or television reception, which can be determined by turning the equipment off and on, the user is encouraged to try to correct the interference by one or more of the following measures:

- Reorient or relocate the receiving antenna.
- Increase the separation between the equipment and receiver.
- Connect the equipment into an outlet on a circuit different from that to which the receiver is connected.
- Consult the dealer or an experienced radio/TV technician for help.

This device complies with part 15 of the FCC Rules. Operation is subject to the following two conditions:(1) This device may not cause harmful interference, and (2) this device must accept any interference received, including interference that may cause undesired operation. Changes or modifications not expressly approved by the party responsible for compliance could void the user's authority to operate the equipment.

This equipment complies with FCC radiation exposure limits set forth for an uncontrolled environment. This equipment should be installed and operated with minimum distance 20cm between the radiator & your body.

IC Warning

This device complies with Industry Canada licence-exempt RSS standard(s).

Operation is subject to the following two conditions:

(1) This device may not cause interference, and (2) This device must accept any interference, including interference that may cause undesired operation of the device.

Changes or modifications not expressly approved by the party responsible for compliance could void the user's authority to operate the equipment.

This equipment complies with IC radiation exposure limits set forth for an uncontrolled environment .This equipment should be installed and operated with minimum distance 20cm between the radiator & your body. This transmitter must not be co-located or operating in conjunction with any other antenna or transmitter.

WARRANTY INFORMATION

Fluance Warranty

Fluance gives the following warranty to the original customer of each new Fluance product purchased from a dealer authorized by Fluance. Fluance warrants that each new product, under normal use, is free from defects, subject to the terms and conditions set forth. If a defect should occur within the warranty period, repairs will be made free of charge for parts and labor when such defects are determined by us to be attributable to faulty materials or workmanship at time of manufacture.

Warranty Period

The Fluance products listed below are warranted for parts and labor for the stated period from the date of original purchase and are subject to the terms and conditions of the warranty.

Home Audio Passive Speakers: Lifetime Warranty

Active/Powered Speakers: 2 Year Warranty

HiFi Turntables: 2 Year Warranty

Warranty Exclusions

- Products purchased from a dealer not authorized by Fluance.
- Products with the serial number defaced, altered or missing.
- Defects resulting from disaster, accident, abuse, misuse, lightning, power surges, neglect, unauthorized modification or water damage.
- Defects or damage as a result of repairs performed by a person or party not authorized by Fluance.
- Defects or damage occurring during shipping (claims should be made with the shipping company).

To Obtain Warranty Service

Should your Fluance product require warranty service, please contact your Fluance Authorized Dealer and send your product fully insured and freight prepaid to the nearest Fluance authorized service center. Before sending to Fluance, you will be required to get a Return Authorization Number from your dealer.

Products shipped without a valid Return Authorization Number will be refused. To avoid possible shipping damage, make sure the product is properly packaged and well protected. Include a copy of your original bill of sale as proof of warranty along with your name, home and/or work telephone number(s), a complete return address and a detailed description of the faults.

Products repaired within warranty will be returned freight prepaid. This warranty in itself is not considered a valid proof of purchase. When applying for warranty repairs, you must present the original copy of your bill of sale as proof of warranty.

FREQUENTLY ASKED QUESTIONS

What is the purpose of the speaker wire inputs?

The speaker wire inputs can be used as an alternative to connect your DB10 to your home theater receiver, however, Fluance recommends using the LFE/Low Level input connected via subwoofer cable. LFE (Low Frequency Effect) refers to a channel specifically intended for deep, low-pitched sounds ranging from 3-120Hz.

How do I adjust the volume / change the crossover settings?

The volume/crossover settings can be adjusted via the volume/crossover knob located on the back panel of the DB10. The crossover setting changes the cut off frequency for the subwoofer.

What is the auto setting and what are the parameters?

By selecting the auto setting the DB10 will automatically turn on when it detects a signal from the home theater receiver. The auto setting turns the subwoofer on when the frequency signal reaches a required voltage. A 100Hz signal requires 3mV and a 1KHz signal requires 5mv.

What is the phase setting and what is the optimal setting?

If your speaker system or DB10 is out of phase. It means that the driver/woofer is moving in the opposite direction of the other drivers/woofers. This causes frequencies to be canceled out, which can result in a poor listening experience. By adjusting the phase setting of the DB10, you can ensure the DB10's woofer is moving in the same direction as your other speakers, which will result in a more pleasant listening experience.

What does the LED behavior mean?

Green LED = Power On
Red LED = Protection Mode

What is Protection Mode?

Amplifier Protection Mode is a shutdown state that amplifiers can enable to prevent serious damage to the unit or other components in the system. Protection Mode can be activated in two scenarios:

1. Unit is overheated – Ensure the area surrounding the DB10 is at room temperature, power off and unplug the power adapter.
2. The unit is not installed properly – consult the included quick start guide and manual, ensure no wires are touching.

fluence.com